

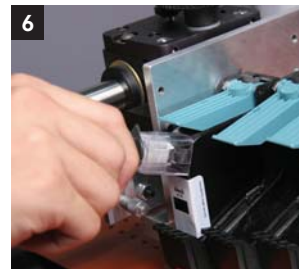
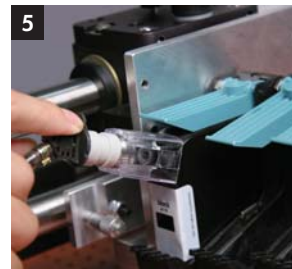


## Ink system set up

1. Remove tape from the printhead.
2. Place printhead in the printer.
3. Place ink reservoir on the ink tray.
4. Ink tray must be located 4 inches below the printhead.
5. Insert valve into the plastic clip on printhead.
6. Listen for a click indicating the valve has snapped into place.

### Important note

- Once the printhead is connected to the reservoir it cannot be taken apart without damaging the system.



## Printhead removal

1. Grasp both sides of printhead to remove it from the printer stall.
2. Do not pull on the tube or clip.
3. Do not raise printhead more than 10 inches above the ink reservoir.

### Important notes

- If printhead is raised higher than 10 inches above the ink reservoir, air will be drawn into it. This will damage the printhead.
- Do not position printhead below the ink reservoir to avoid ink leakage.

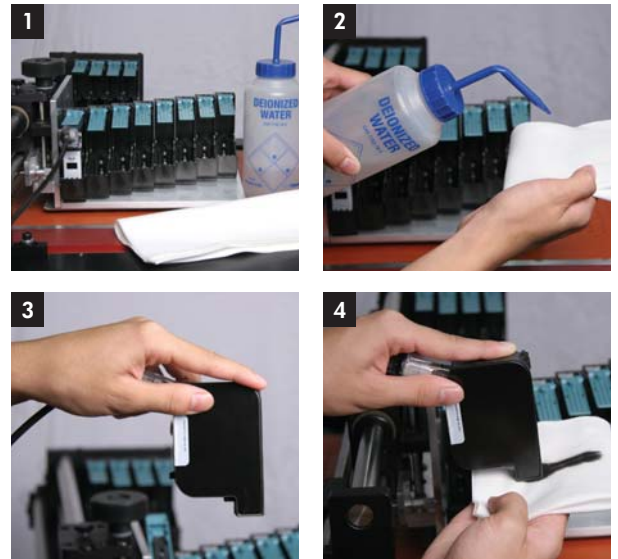


## Printhead cleaning

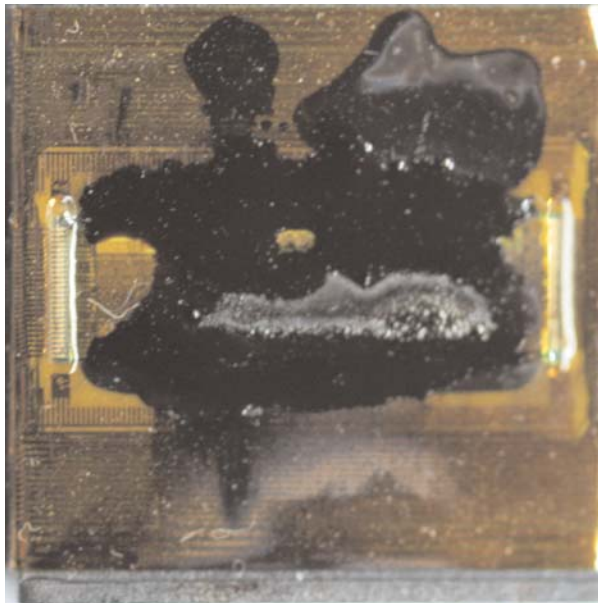
- 1–2 Use a lint-free cloth, moistened with deionized water.
- 3–4 Wipe slowly and lightly across tip of the long edge with the printhead facing down as shown.

### Important notes

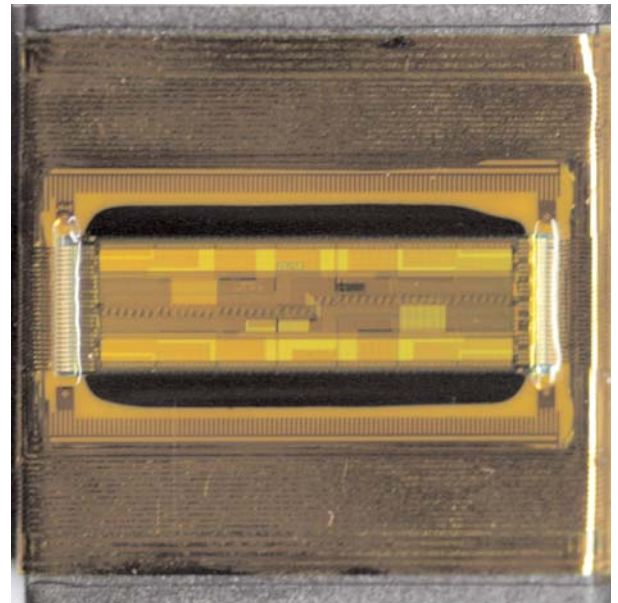
- Do not use force or a dry cloth to avoid scratching the nozzles.
- Do not use a cloth with lint to avoid clogging the nozzles.



## Does your printhead need cleaning?



This dirty printhead requires wiping.



This is how your printhead should look after cleaning.

## Purge the nozzles

If your printhead sits inactive for a period of time, you should purge the nozzles by following these steps.

- Wipe the printhead as shown in the Printhead Cleaning section above.
- Print a few lines of high-resolution text (600 dpi or higher).
- Higher resolutions exercise more nozzles and push out more ink.

### Important note

- Do not shake the printhead as ink pressure will damage the nozzles.



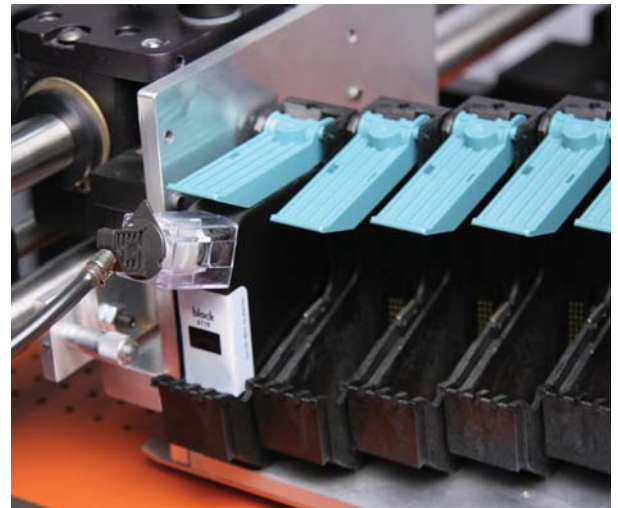
## Short- and long-term storage procedures

### If stored for less than one day

- Leave printhead in the machine.
- Wipe and purge the printhead next time it is used.

### If stored for more than one day

- Remove printhead from the printer stall.
- Place printhead above the ink reservoir and fasten with a rubber band as shown.
- Place the entire system in an airtight container with a damp cloth or sponge to prevent printhead from drying out.
- Close the container tightly.
- Wipe and purge the printhead next time it is used.



## System disposal

- Keep printhead connected to the ink reservoir when disposing of system.
- Place the entire system in a plastic bag to avoid ink leakage.

## Important handling cautions

- Never squeeze the ink reservoir as this will push ink out of the printhead.
- Never shake, drop or hit the printhead to avoid getting air in it.
- Never hold the printhead more than 10 inches above the ink reservoir when removing the system for storage to avoid getting air in it.
- Never hold printhead below the reservoir to avoid ink leakage.

© 2006 Hewlett-Packard Development Company, L.P. The information contained herein is subject to change without notice. The only warranties for HP products and services are set forth in the express warranty statements accompanying such products and services. Nothing herein should be construed as constituting an additional warranty. HP shall not be liable for technical or editorial errors or omissions contained herein.

To learn more, visit [www.hp.com](http://www.hp.com)

4AA0-9438ENUC, November 2006

